

# Sanialarm

## A unique concept

Occasional power outages, scaling of poorly maintained old appliances or even problems with clogged pipes, are all factors in significant variation of the water level permanently contained in an SFA macerator or pump.

To tackle this kind of unpredictability, SFA offers an efficient solution that provides instant alerts to avoid inappropriate use and take immediate action.

Reference  
ALARM



Can be installed on all macerator pumps  
and also Sanivite and Sanispeed  
The Sanialarm works with 2 1.5V batteries  
(not supplied)

## How does it work?

The Sanialarm is positioned on the cover of the SFA device. It consists of a level pressure switch which automatically activates the warning buzzer when the water volume exceeds the maximum permitted level. The alarm then produces an intermittent sound until it is silenced, and the problem resolved.

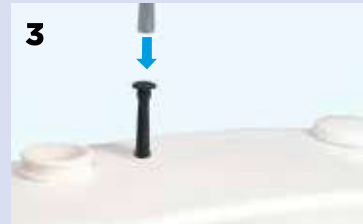
## Easily install the Sanialarm



1  
Insert 2 standard 1.5V batteries  
(not supplied) into the unit.



2  
Drill a 10 mm diameter hole  
in the location shown on the  
appliance hood.



3  
Coat with silicone grease before  
inserting the pressure switch  
tube of the Sanialarm.



4  
Attach the Sanialarm  
inside the opening of the tube.



5  
Switch to the  
ON position.

**BEFORE HANDLING:  
DISCONNECT  
THE POWER SUPPLY  
FROM THE  
MACERATOR.**